



EU Energy Poverty Advisory Hub

Dora Biondani, Senior project coordinator

Energy Poverty Advisory Hub (EPAH)

L' Energy Poverty Advisory Hub, iniziativa promossa dalla Commissione Europea per richiesta del Parlamento Europeo, e' una rete di stakeholders che si pone come obiettivo di ridurre la poverta' energetica e accelerare la transizione energetica delle istituzioni locali in Europa



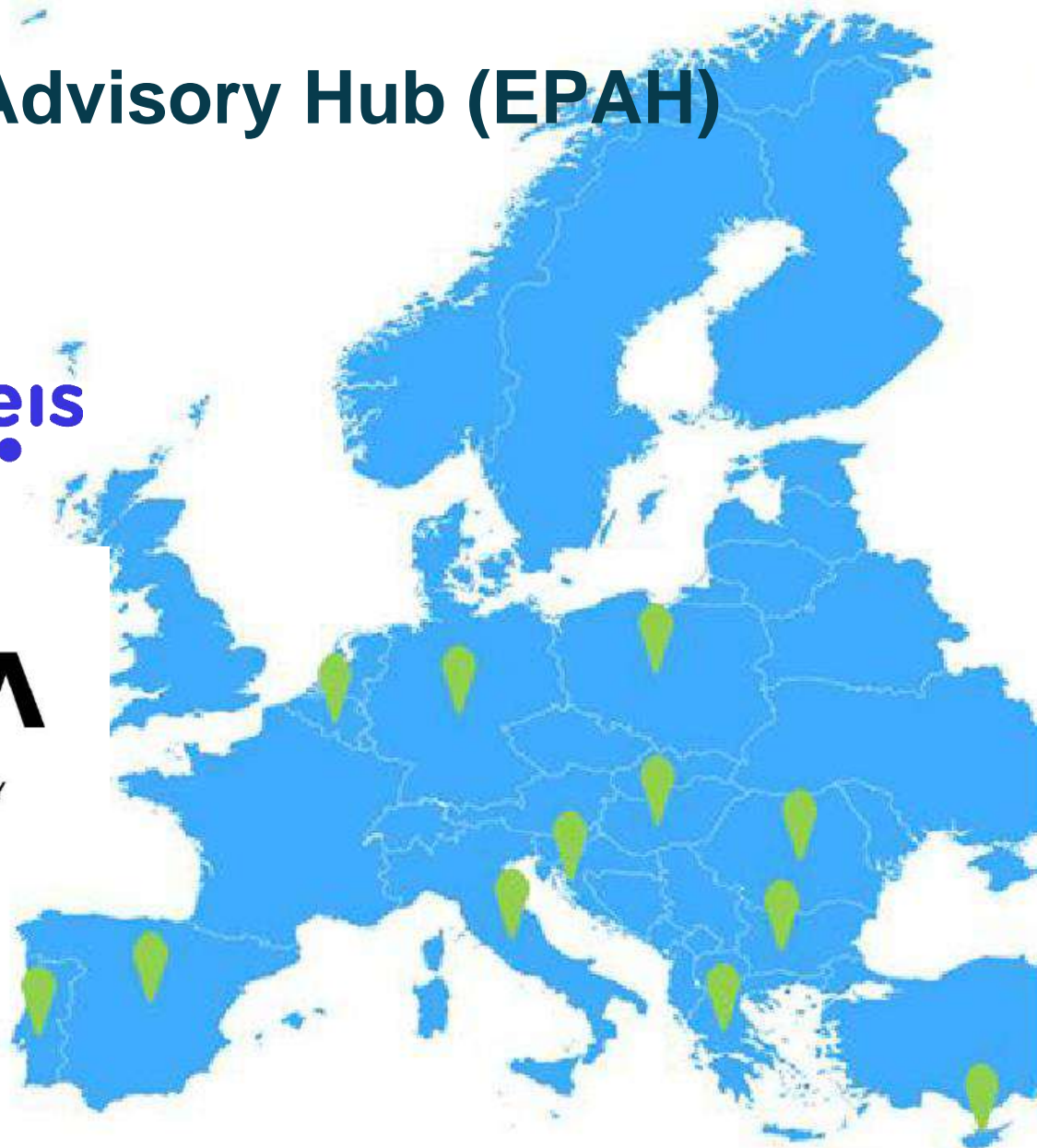
Energy Poverty Advisory Hub (EPAH)



Climate Alliance



WEBTOOLS • UMWELT • FÖRDERUNGEN



PORTUGAL

NOVA

SPAIN

ecoserveis

IRELAND

3 Counties Energy Agency

BELGIUM

Climate Alliance Brussels Office

GERMANY

Climate Alliance Germany Office

ITALY

AISFOR

CROATIA

DOOR

GREECE

Anatoliki

CYPRUS

Cyprus Energy Agency

HUNGARY

Climate Alliance Hungary Office

BULGARIA

Sofia Energy Centre

ROMANIA

Ashoka

POLAND

Polish Network of Energy Cities

Basi — Da dove



La missione — Verso dove



Visione

Eliminare la povertà energetica e accelerare il processo di transizione energetica per le istituzioni locali in Europa.

Missione

Essere il centro di riferimento in Europa per la povertà energetica.

Approccio — Come



Attenzione mirata al livello locale

Creare sinergie fra le diverse istituzioni (locali, nazionali, regionali, europee)

Come

Fornendo supporto diretto, corsi di formazione in internet, ricerche ed informazioni disponibili per le istituzioni locali e per le organizzazioni della società civile, costruendo un network collaborativo di differenti stakeholders interessati ad intraprendere azioni concrete per combattere la povertà energetica.



EU Energy Poverty Advisory Hub

- Gli strumenti

EPAH – Gli strumenti

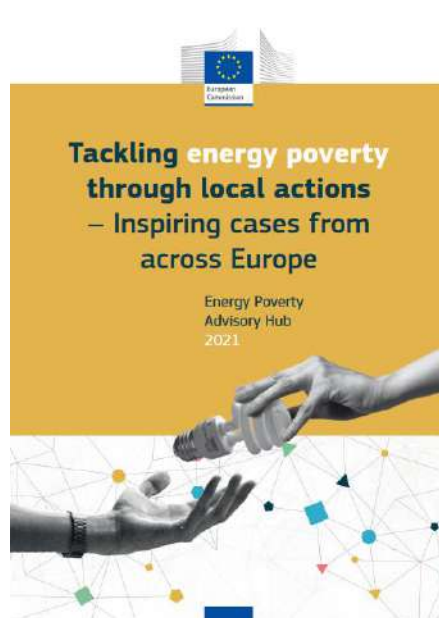
- Ricerche e guide pratiche
- Supporto diretto
- Corsi di formazione
- Costruzione di un network collaborativo



Local solutions

The report

Tackling energy poverty through local actions – Inspiring cases from across Europe

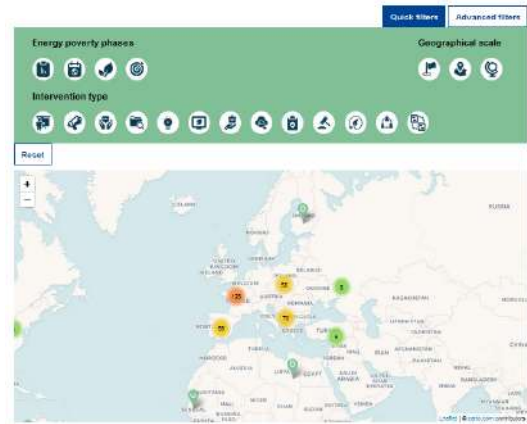


The EPAH ATLAS

EPAH ATLAS

The Energy Poverty Advisory Hub has collected more than 200 inspirational cases during a research period that took place in 2021. The EPAH ATLAS is an online interactive database that allows visitors to discover local and international projects as well as measures addressing energy poverty across the world. Visitors can explore the interactive map, view a list of all projects and read more information about any case. A list of quick and advanced filters allows visitors to browse through the cases in an easy and effective way.

Is your case, project or measure, not part of the EPAH ATLAS yet? Submit your work. Download the [submission template](#) (PDF), fill in all the relevant information and send it to the EPAH helpdesk at: info@energypoverty.eu. Your case will be added to the EPAH ATLAS. If your project/measure is already part of the database but wish to submit changes, you can contact the EPAH helpdesk too.



The

Introduction to energy poverty and the EPAH – Introductory course

Introduction to energy poverty and the EPAH – Introductory course

The "Introduction to energy poverty and the EPAH – Introductory course" is a short course open to all stakeholders interested in addressing energy poverty. It provides an overview of energy poverty from a practical-political perspective.

The course is open to all, and no prerequisites are needed.

The duration is approximately one hour and is made up of six lessons divided into three modules, which can be taken individually. Participants that complete all the modules will receive a course certificate.

The course is available in English with subtitles in 23 European languages.

Registration to the course is offered continuously. Every 1st and 15th of each month, the registrations will be checked and accepted. The user will receive an automatic notification (via email) with the indications to access the online platform.

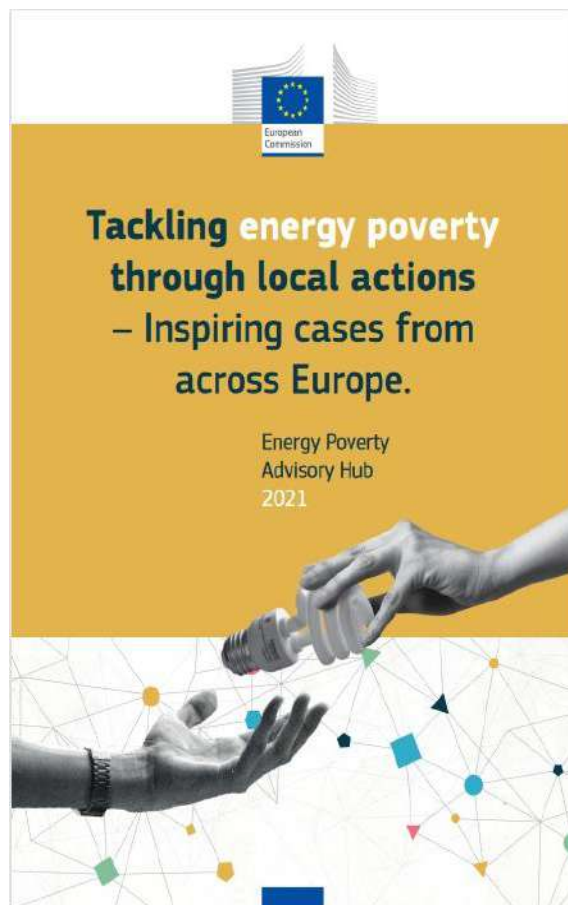
To follow the course, you need to create an account to the Energy Poverty Advisory Hub platform and sign up for the course.

- Open to all
- Available now
- Estimated effort: 1 hour
- Alternative languages:
 - Italian
 - Spanish

Join the course

www.energypoverty.eu

Tackling Energy Poverty Through local actions



24 casi ispirazionali da differenti aree geografiche e con diversi argomenti. Tradotto in tutte le 27 lingue europee

https://energy-poverty.ec.europa.eu/system/files/2022-02/EPAH_inspiring%20cases%20from%20across%20Europe_report_IT.pdf

Tackling Energy Poverty Through local actions

8 TACKLING ENERGY POVERTY THROUGH LOCAL ACTIONS – INSPIRING CASES FROM ACROSS EUROPE

Audits and interventions in homes experiencing energy poverty

2020 2021

The Barcelona Provincial Council organised **Audits and interventions in homes in a position of vulnerability**. This is a cross-departmental initiative promoted by the areas of Social Welfare, Environment and Housing of the Provincial Council, which offers town councils actions to enhance the energy efficiency of homes experiencing energy poverty to reduce expenditure on basic utilities (electricity, water and gas) and enhance quality of life.

Geographical scale: Regional

Barcelona, Catalunya, Spain

Since 2019, two editions were organized with the 2021 edition reaching almost 3,200 energy audits in line with the EH Renovation Wave and the Fit Green Deal. The programme aims to:

- Improve the energy efficiency of homes, and health and comfort conditions, by conducting a home energy audit, assess the needs of the building and propose actions, provide further related advice to align contracts to actual needs, assess in procedures with supply companies to reduce spending on utilities.
- Deliver training on efficient consumer habits and consumer rights, and identify broader intervention needs to foster energy efficiency improvement.

The interventions therefore concluded by companies contracted by the Barcelona Provincial Council that coordinate and lead all aspects. The programme is an example of good practice of an inter-administrative model (provincial council and towns and public-private cooperation, and reaches all towns within the province of Barcelona. The examination of social, health and energy related aspects propose specific solutions to align the interventions to the needs of each family and make them in CO₂ envelope to contribute to the goals of climate change mitigation. Nearly 90 per cent (80%) of the beneficiaries consider the assistance extremely highly useful to improve their level of comfort at home.

Energy poverty phases:

- Diagnosis
- Planning
- Implementation
- Impact

Intervention type: Communication campaigns, consumer advice, protection and empowerment, household energy efficiency and retrofits, stakeholder engagement, transparency and information sharing.

The programme develops the following activities:

- Activities, briefable and meetings with facilities from local authorities (municipalities).
- Two visits by energy efficiency and social intervention professionals in the households. The visits include the collection of data on the social background of the beneficiaries, on the home, an energy assessment and the installation of basic elements for energy efficiency. The visits provide personalised advice on efficient consumption and guidance on adjusting contracts to meet the beneficiaries' actual needs, are built around prioritising steps to ensure the services are accessible to their actual needs and reduce utility costs.
- A report is completed for the actions carried out for the beneficiaries of each town. Aggregate reports are prepared on all actions undertaken in each town. Sessions are organized to present the outcomes of the interventions. The reports are uploaded to an online tool that allows actions and documents to be managed digitally and to link contractor companies, Barcelona Provincial Council and individual town councils.

With a budget of about 500,000 euros, it managed to reach 5,000 people through visits and actions, carry out about 3,200 actions to optimize utility contracts, reduce the cost of their utility bills by 15%, save 22,500 kWh per home on electricity bills, and set up for free almost 23,000 energy efficiency elements.

Formal challenges are related to the stakeholders' involvement, contact with beneficiaries (optimal registration about receiving home visits), information flow between social workers and technical teams, and follow-up after the interventions. The main weaknesses were the limited intervention and that the proposed interventions were not implemented during phase 2.

Topics: Air quality, health, behaviour, heating and cooling systems, household appliances, climate change, indoor comfort, information and awareness, regulations, economic crisis, quality of dwellings, energy access and consumption, energy audits, safety, energy efficiency, energy prices, social support, sustainable consumers.

The professionals:

- Energy efficiency technicians
- Social intervention technicians (e.g. social workers, social educators, psychologists, psycho-educators, psychologists, sociologists, social integration technicians)

The partners: Local authority, University Research centre, La Factaria, Gentilini y Consultors (private energy services company), EGM Consult (Barcelona), Greenlight (private company), SH Services (Mediaset services, private company).

Funding: Local funds by the Barcelona Provincial Council.

Type of stakeholders: Energy supplier, general population.

Beneficiaries: From the program: Children, adults, elderly, low-income.

Slime (Service Local d'Intervention pour la Maîtrise de l'Energie)

2013

Slimes are one-stop shops detecting energy poverty, implementing energy audits but also social diagnostics for identified households and helping the householders by redirecting them towards existing sustainable and adapted solutions to climb out of energy poverty situations. The selected households receive a visit from Slime advisors to conduct a socio-technical audit. They evaluate the household's needs according to their revenue, the building's thermal envelope, home appliances, etc. They suggest building retrofits, a change in their energy contracts, link households to entities capable of helping them alleviate their energy poverty.

Geographical scale: National

France

The intervention methodology and budget allocation of the Slime programme is designed nationally by CLER (a non-profit association), and deployed locally by authorities in Slime schemes (50 to date). The implementation of the Slime methodology by a local authority is co-financed by the ESC scheme.

The activities developed include:

- Designing the scheme by local authorities.
- Responding to CLER's call for applications by the local authority.
- Visiting the scheme by CLER if the methodology presented corresponds to that of Slime.
- Launching the scheme and actions.
- Annual validation by CLER of the local authority's expenditure, the number of visits made and the conformity of the actions.
- Payment to CLER of the corresponding sums by the funding partners at national level ("the obligés" in the ESC scheme).
- Indemnisation by CLER to the local authorities of the sums paid.

Energy poverty phases:

- Diagnosis
- Planning
- Implementation
- Impact assessment

Intervention type: Household monitoring, technical advice and/or intervention.

Topics: Information and awareness, social support, technical support.

the household's needs and provide an extensive range of responses, from installing small saving devices like low-consumption light bulbs to help in the renovation process of inefficient buildings. Beyond the local point of view, Slime is part of a large, national network allowing collaboration and knowledge sharing between multiple authorities. The existence of the energy certificates funding scheme is also an upside for reducing the necessary budget for local authorities, which directly contributes to launching the scheme locally.

With an annual budget of about 110,000 euros per Slime community, the project has:

- Benefited 52,000 fuel-poor households.
- Saved an average of 170 euros in water and energy costs in annual household bills.
- Carried out the first action for 8.4% of the beneficiary households.
- Carried out retrofitting works for 46% of the households.

The deployment of Slime depends partly on the availability of relevant locally certified actors. A collective looking to create a Slime needs to ensure that it can count on skilled stakeholders in the area, otherwise, it will need to train a workforce to become advisors.

Benefited from the project: Low-income households, local and regional authorities.

Type of funding: Private funding from energy providers ("the obligés" within the frame of the Energy Savings Certificates Scheme (ECS) and co-financed by the Ministry of Ecological Transition).

Type of stakeholders: Local authorities, associations, social landlords, energy providers.

The professionals:

- Members of a local authority
- Social workers
- Technician

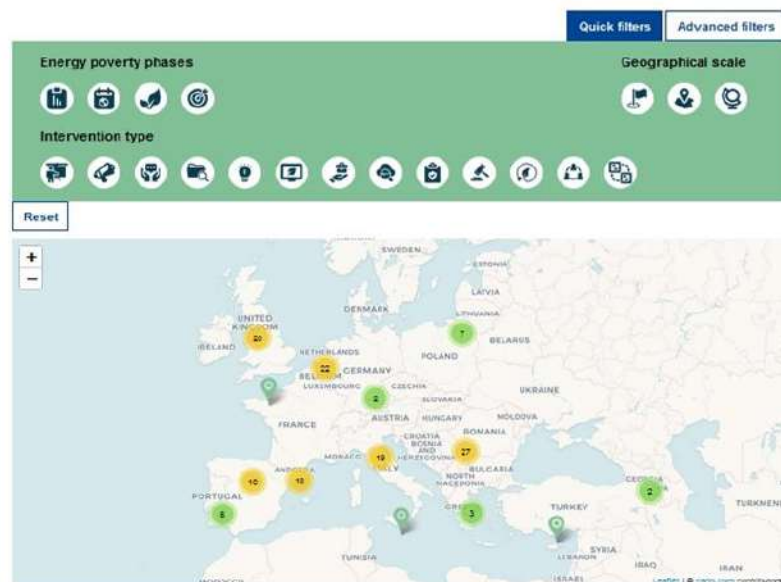
Authorities in France can participate in the call for tenders launched by CLER to create their own Slime. Projects under the same book include: Energy Advice Points (Spain), Energy Advisory Office (Spain), Energy Advisory Point of Santa Coloma de Gramenet (City of Spain), Green Doctors (United Kingdom).



European
Commission

EPAH ATLAS -

https://energy-poverty.ec.europa.eu/discover/epah-atlas_en



AtC - Abriçà tu Casa
Argentina

The project aims to turn weatherization into a public housing improvement policy in the city.



HOPE HOPE Chair of Excellence - Eradicating energy poverty
France

The HOPE chaire is a cross-disciplinary research on energy poverty to deepen understanding of previously underexplored issues like the links between housing and mobility and housing and health in the context of energy poverty.

POWERPOOR - Empowering Energy Poor Citizens through Joint Energy Initiatives

POWERPOOR supports programmes for energy-poor citizens (e.g. behaviour change, adoption of RES, uptake of energy efficiency measures) and encourages the use of alternative financing schemes (e.g. establishing energy communities/cooperatives, crowdfunding) to fight energy poverty.

Energy poor support programmes will be designed, developed and implemented in eight pilot countries across Europe, led by a network of certified energy supporters and energy communities mentors. Energy poor citizens will be engaged through a framework consisted of info days, local energy poverty offices and ICT driven tools, which will be integrated in the Energy Poverty Mitigation Toolkit.

With a budget of over 1 million €, POWERPOOR will also promote energy community projects / alternative financing schemes and assisting citizens to pursue funding opportunities (e.g. energy communities, energy cooperatives & crowdfunding).

The project started in 2020 and will last until 2023. It benefits energy advisors, the energy poor, frontline workers and national/local authorities. It addresses the topics of: hard to treat homes, behaviour, heating and cooling system, household appliances, communities, idea development/ innovation, income, indoor comfort, information and awareness, insulation, education, quality of dwelling, renewable energy, energy audits, energy efficiency, energy prices, financing schemes, vulnerable consumers.

Some concrete key performance indicators (KPIs) of the project include:

- 22000 energy-poor households involved in pilot support programmes;
- 172 GWh/year of energy saved;
- 8 national roadmaps drawn;
- 226 million euros in cumulative investments in sustainable energy.



Geographical scale:
Bulgaria, Croatia,
Estonia, Greece,
Hungary, Latvia,
Portugal, Spain

Energy poverty phase:
Diagnosis
Planning
Impact assessment
Implementation

Intervention type:
Capacity building and
training
Consumer Advice,
protection and
empowerment
Data collection
Financial mechanisms
Household energy
efficiency and
refurbishment
Monitoring and Impact
Assessment
Transparency and
information sharing

Professionals involved:
Researcher
Member of a
local/national authority
Engineer
Social worker
Student
Technician
Volunteer

Type of funding:
European funds from the
H2020 programme of the
European Union

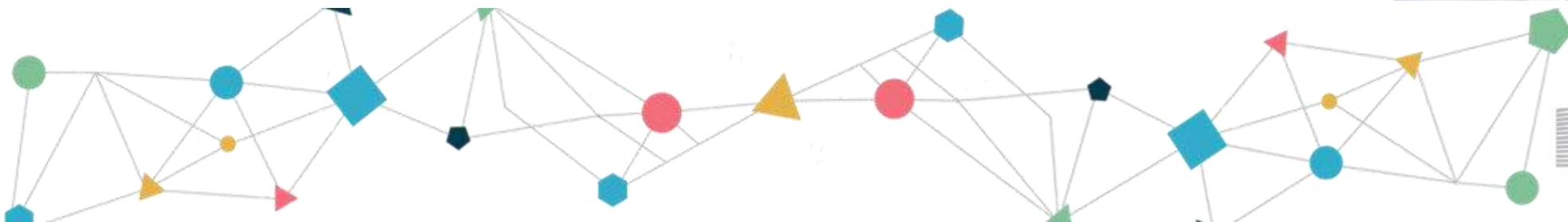
SDGs addressed:
7
11
13



European
Commission

EPAH ATLAS – Uno strumento collaborativo

Is your case, project or measure, not part of the EPAH ATLAS yet? **Submit your work.** Download [the submission template](#) EN | ..., fill in all the relevant information and send it to info@energypoverty.eu. Your case will be added to the EPAH ATLAS.





Energy Poverty Advisory Hub

Home

Discover ▾

Support ▲

Energy Poverty Observatory ▾

Covenant of Mayors

About ▾

Home > Support > EPAH on

[EPAH online courses](#)

[Trainings catalogue](#)

[Helpdesk](#)

Learning opportunities

Primo corso – Introduzione alla povertà energetica e EPAH

reduction to
energy poverty
of the EPAH



Introduction to energy poverty and the EPAH – Introductory course



The "Introduction to energy poverty and the EPAH – *Introductory course*" is a short course open to all stakeholders interested in addressing energy poverty. It provides an overview of energy poverty from a practical-political perspective.

The course is open to all, and no prerequisites are needed.


The duration is approximately one hour and is made up of six lessons divided into three modules, which can be taken individually. Participants that complete all the modules will receive a course certificate.


The course is available in English with subtitles in 23 European languages.

Registration to the course is offered continuously. Every 1st and 15th of each month, the registrations will be checked and accepted. The user will receive an automatic notification (via email) with the indications to access the online platform.

To follow the course, you need to create an account to the Energy Poverty Advisory Hub platform and sign up for the course.

Gia' accessibile
Durata stimata di 1h

 **Open to all**

 **Available now**

 **Estimated effort:** 1 hour

 **Alternative languages:**

Italian

Spanish

Join the course



European
Commission

Corso



Certificate of Completion

This certificate is proudly presented to

Name and Surname

(optional:) organisation name and City, Country

for successfully completing the Energy Poverty Advisory Hub online course

"Course Title"

in date (month and year e.g. May 2022)

Marina Varvesi
Marina Varvesi,
Course Coordinator,
Energy Poverty Advisory Hub

Jeppe Mikél Jensen
Jeppe Mikél Jensen,
Project Manager,
Energy Poverty Advisory Hub

Energy Poverty Advisory Hub Supporto Diretto

HELPDESK

Single and easily accessible
point of contact

Punctual and specific queries



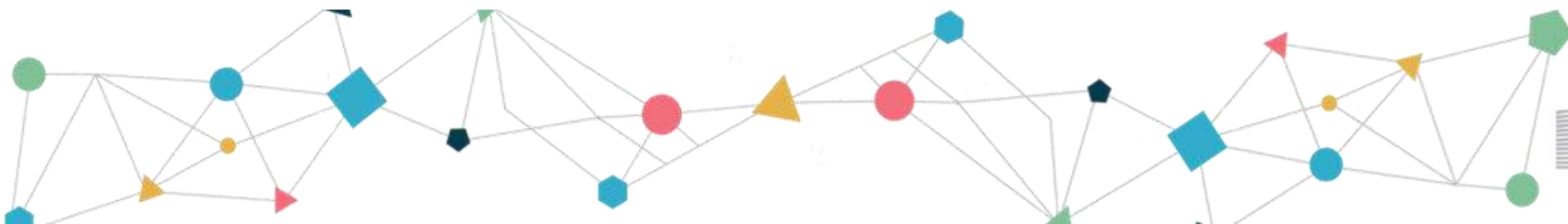
DIRECT PROJECT SUPPORT

Intensive support provided
via an open call for
proposals

Specific challenges



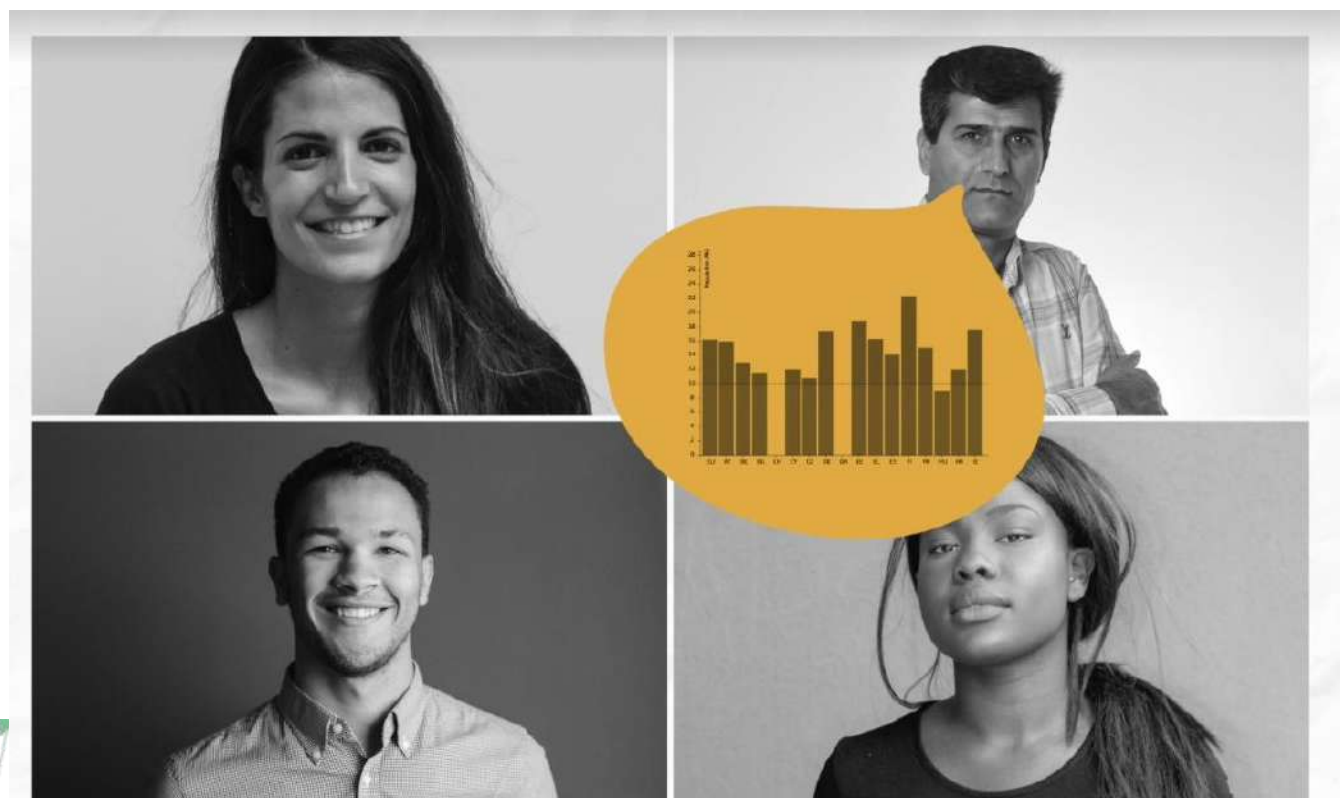
EPAH Direct
Technical
assistance



European
Commission

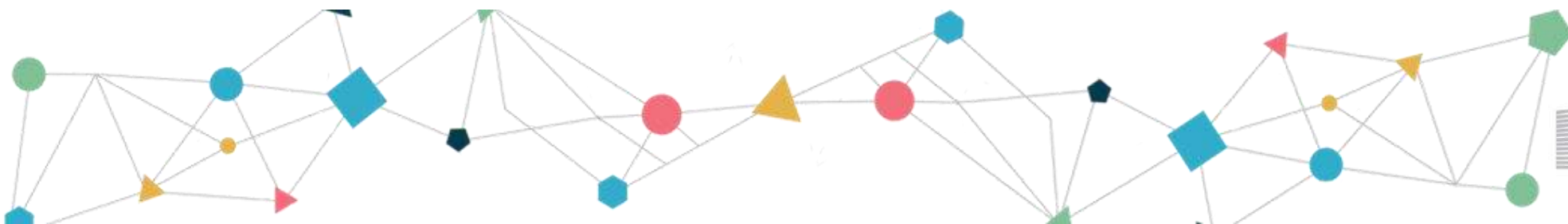
Supporto Diretto

*Prima Gara aperta dal 1 Febbraio con scadenza al 1
Marzo 2022*



European
Commission

Helpdesk



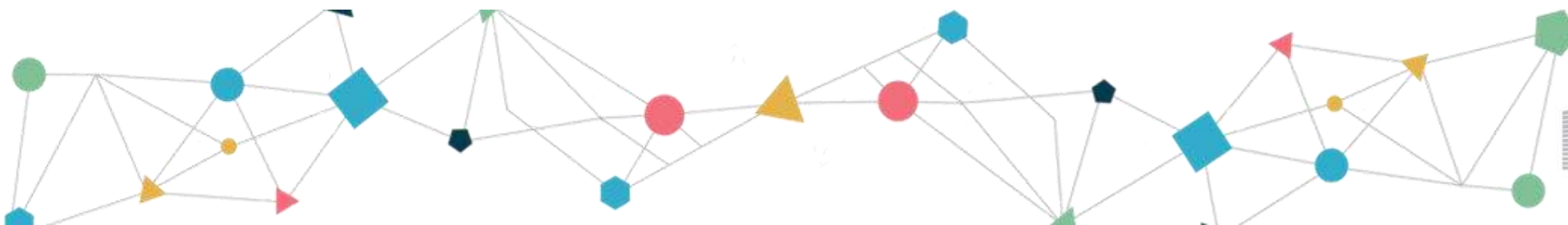
European
Commission

Trilogia di guide

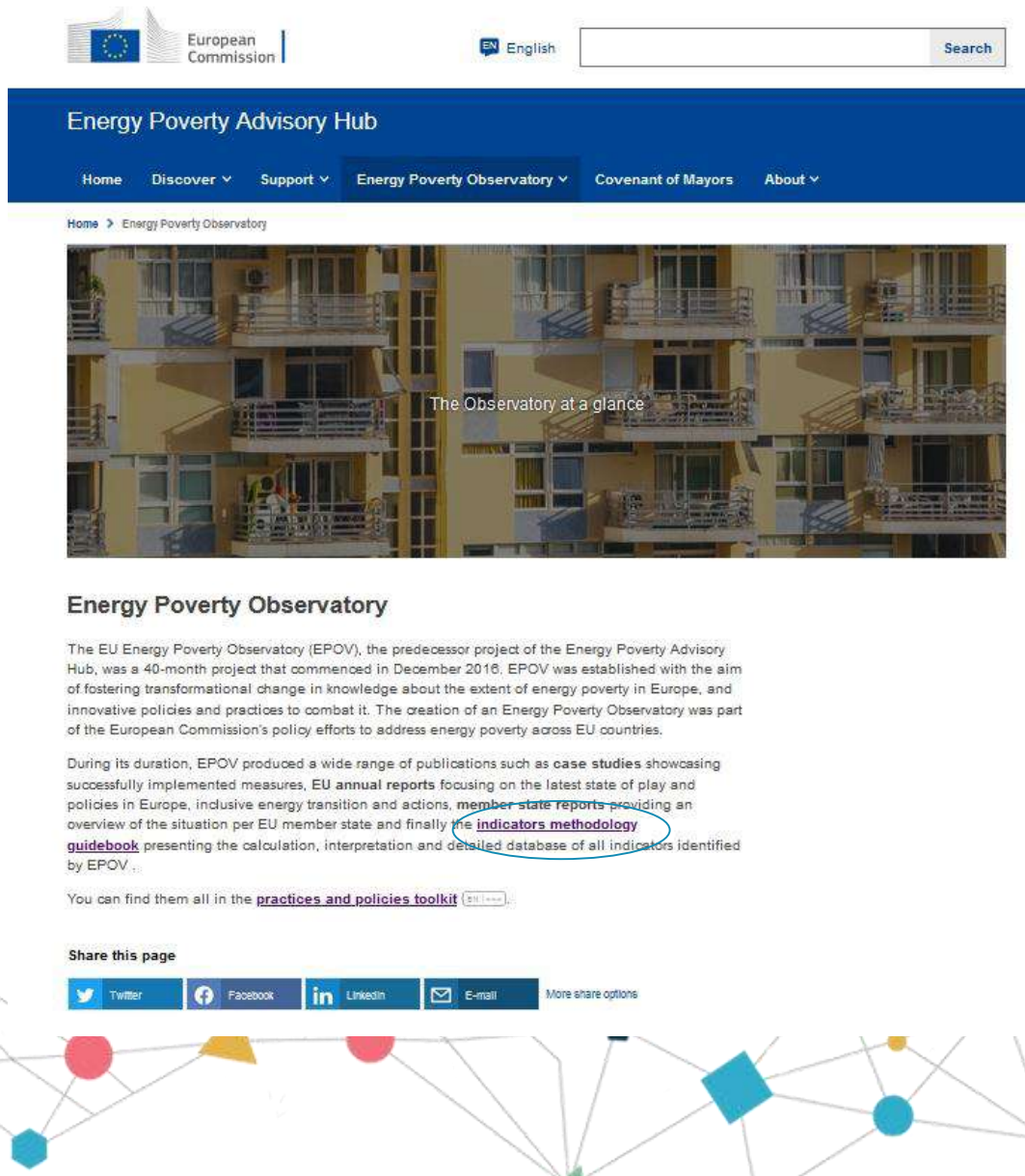

Guide pensate per promuovere azioni concrete.

Ciascuna focalizzata su differenti aspetti della povertà energetica

- *Come individuare la povertà energetica nel contest locale (**diagnosis**)*
- *Come pianificare azioni concrete per ridurre la povertà energetica (**planning**)*
- *Come implementare le azioni pianificate (**implementing**)*



Sito internet



The screenshot shows the homepage of the Energy Poverty Observatory. At the top, there is a navigation bar with the European Commission logo, a language selector set to 'English', and a search bar. Below this is a blue header with the title 'Energy Poverty Advisory Hub' and a menu with links: Home, Discover, Support, Energy Poverty Observatory (selected), Covenant of Mayors, and About. The main content area features a large image of a multi-story apartment building with the text 'The Observatory at a glance' overlaid. Below the image is the section 'Energy Poverty Observatory' with a paragraph describing the project's history and goals. A second paragraph details the publications produced, with 'indicators methodology' circled in blue. A third paragraph mentions the 'practices and policies toolkit'. At the bottom, there is a 'Share this page' section with social media icons for Twitter, Facebook, LinkedIn, and Email, along with a 'More share options' link. The footer includes the European Commission logo and name.


European Commission

EN English Search

Energy Poverty Advisory Hub

Home Discover Support Energy Poverty Observatory Covenant of Mayors About

Home > Energy Poverty Observatory



The Observatory at a glance

Energy Poverty Observatory

The EU Energy Poverty Observatory (EPOV), the predecessor project of the Energy Poverty Advisory Hub, was a 40-month project that commenced in December 2016. EPOV was established with the aim of fostering transformational change in knowledge about the extent of energy poverty in Europe, and innovative policies and practices to combat it. The creation of an Energy Poverty Observatory was part of the European Commission's policy efforts to address energy poverty across EU countries.

During its duration, EPOV produced a wide range of publications such as case studies showcasing successfully implemented measures, EU annual reports focusing on the latest state of play and policies in Europe, inclusive energy transition and actions, member state reports providing an overview of the situation per EU member state and finally the indicators methodology guidebook presenting the calculation, interpretation and detailed database of all indicators identified by EPOV.


You can find them all in the practices and policies toolkit

Share this page

Twitter Facebook LinkedIn E-mail More share options

European Commission

Sito internet

 European Commission

English

Search

Energy Poverty Advisory Hub

[Home](#) [Discover](#) [Support](#) [Energy Poverty Observatory](#) [Covenant of Mayors](#) [About](#)[Home](#) > [Discover](#) > [Practices and policies toolkit](#)

Practices and policies toolkit



Browse through our practices and policies database

Our practices and policies toolkit highlights a variety of practices that can inspire you to address energy poverty by access research publications and by getting to know more about policies and like-minded organisations active against energy poverty.

Below, you can access a database of policies, publications, and organisations working on energy poverty from across Europe.

Do you also work on energy poverty and want to submit one of the above in our database?

You can send it to our helpdesk at: info@energypoverity.eu.

[Publications](#) [Organisations](#) [Policies](#)

Filter by

Keywords

Publication type

Publication date

Subject

Practices and policies toolkit (68)

RSS

Showing results 1 to 10

REPORT | 11 OCTOBER 2021 | PROVISIONAL DATA

EPOV Member State Report - Denmark

The Member State Report of the EU Energy Poverty Observatory (EPOV) provides an overview of the energy poverty situation in Denmark at a glance. With key indicators, policies and publications, it offers an understanding of the key aspects of energy poverty in Denmark.

SCIENTIFIC PAPER | 11 OCTOBER 2021 | PROVISIONAL DATA

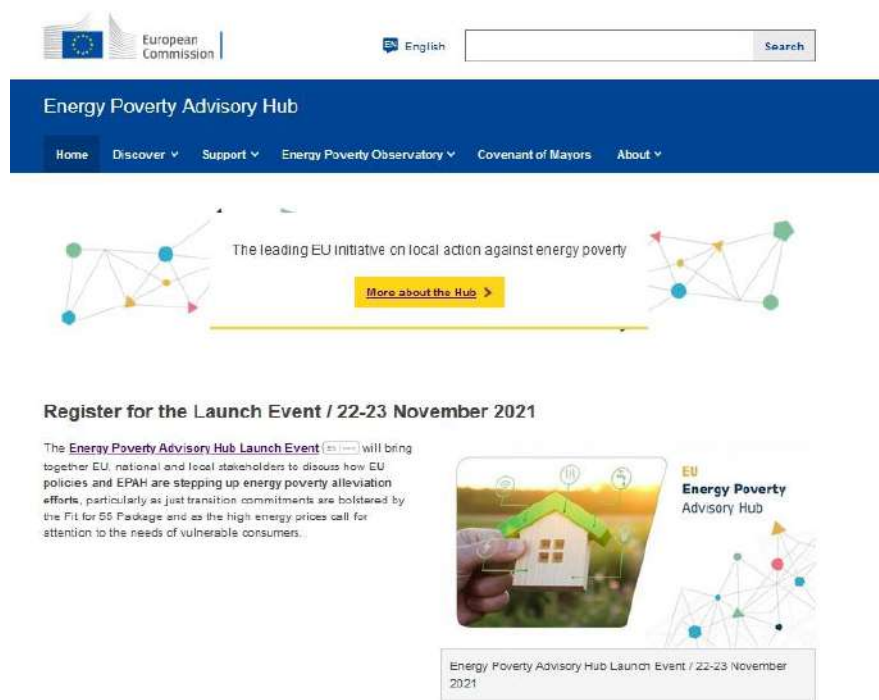
The association of energy poverty with health, health care utilisation and medication use in southern Europe

The main objective of this study was to analyse the association between EP and distinct indicators of



European
Commission

Sito Internet



[Learn more about the event](#)

[Discover](#)

Our upcoming ATLAS on inspirational cases from across Europe.

[Benefit](#)

Check out how we can support you.

Latest



European
Commission

Eventi

Conferenze, workshop e altre attività saranno organizzate in diverse nazioni Europee con l'obiettivo di aumentare la consapevolezza sulla povertà energetica e promuovere lo scambio di esperienze e conoscenze.



ONLINE EVENT
16 June 2021, 09:00 am CEST

**"The new
Energy Poverty
Advisory Hub:
local action against
energy poverty"**

@ Covenant of Mayors Investment Forum

 European Commission



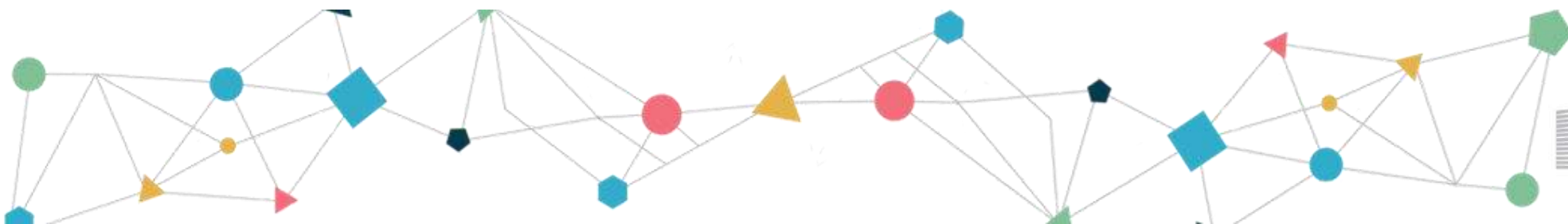
Network

Centro di riferimento e di divulgazione non solamente EPAH ma per ogni organizzazione che sta concretamente lavorando sulla povertà energetica.



Newsletter

<https://ec.europa.eu/newsroom/ener/user-subscriptions/2554/create>





Contatti

info@energypoverity.eu

dora.Biondani@energypoverity.eu

Sito internet

www.energypoverity.eu